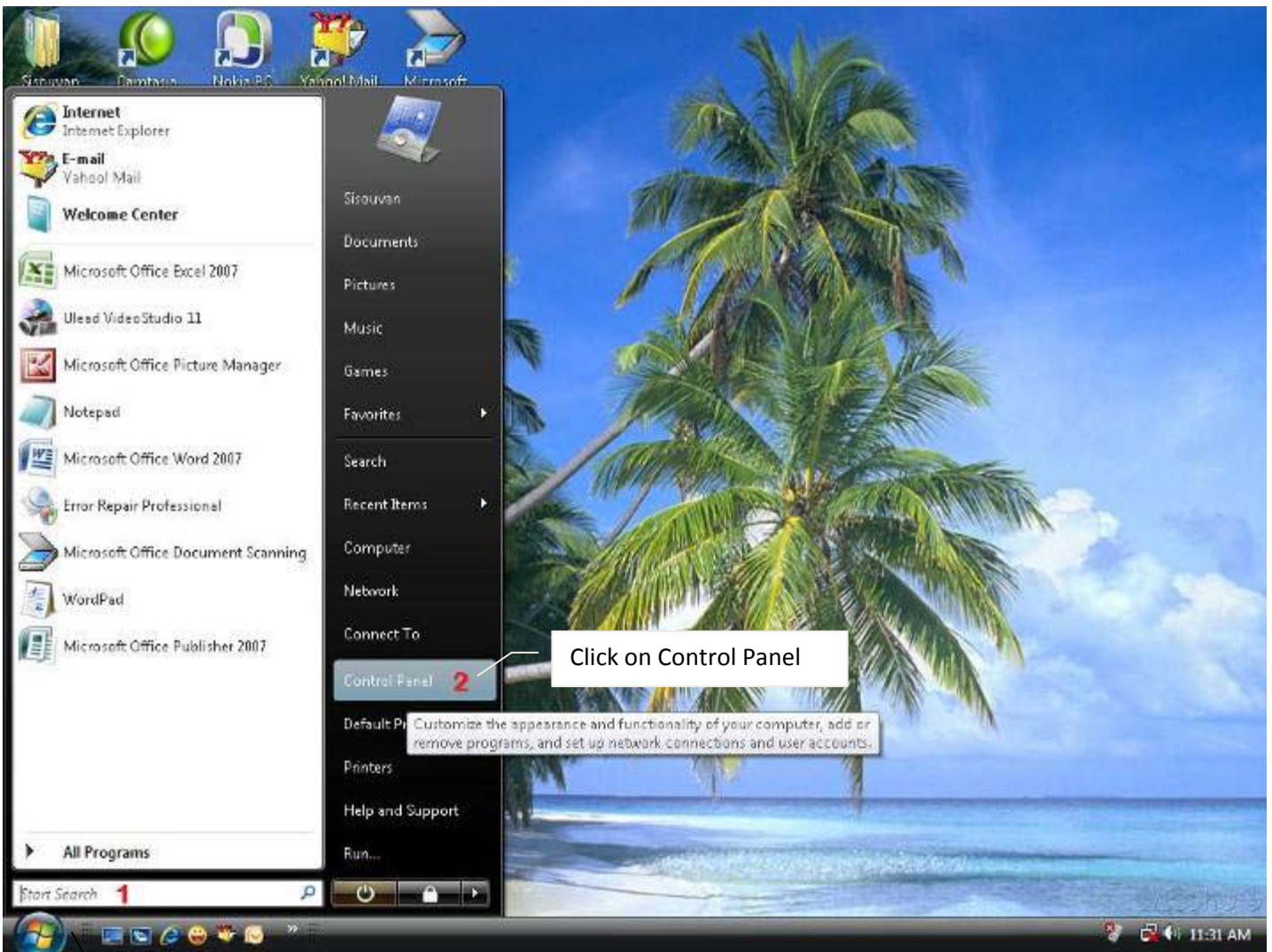
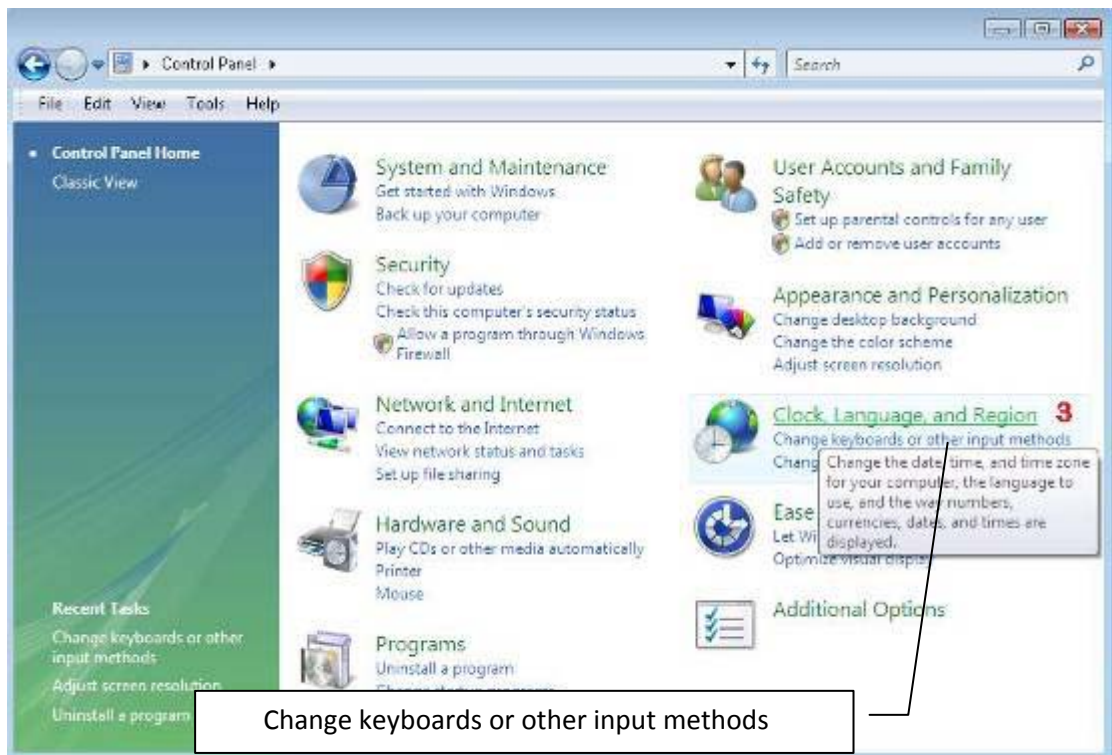


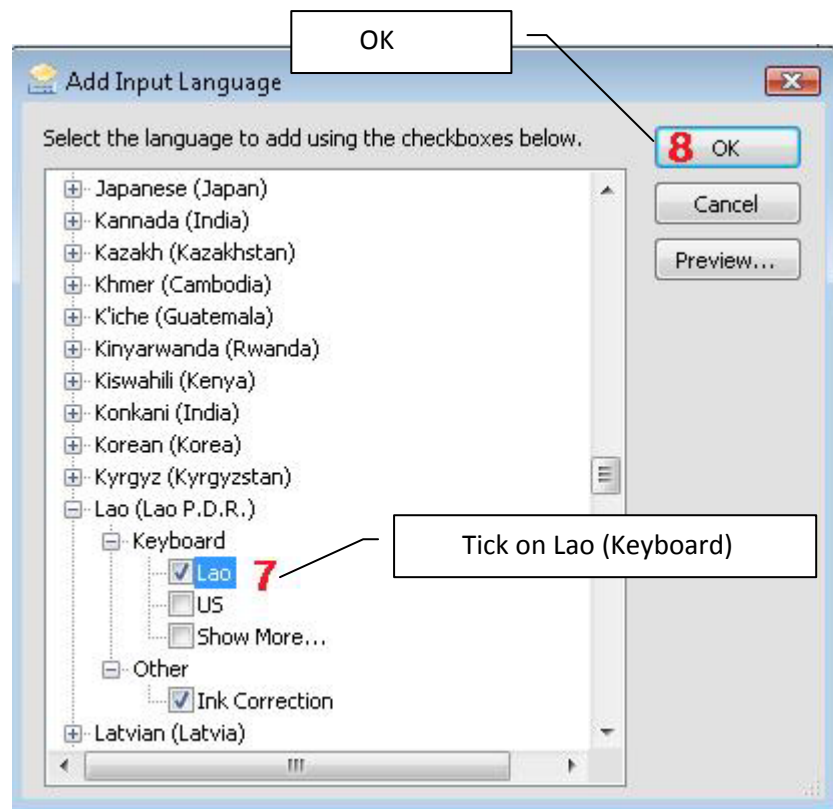
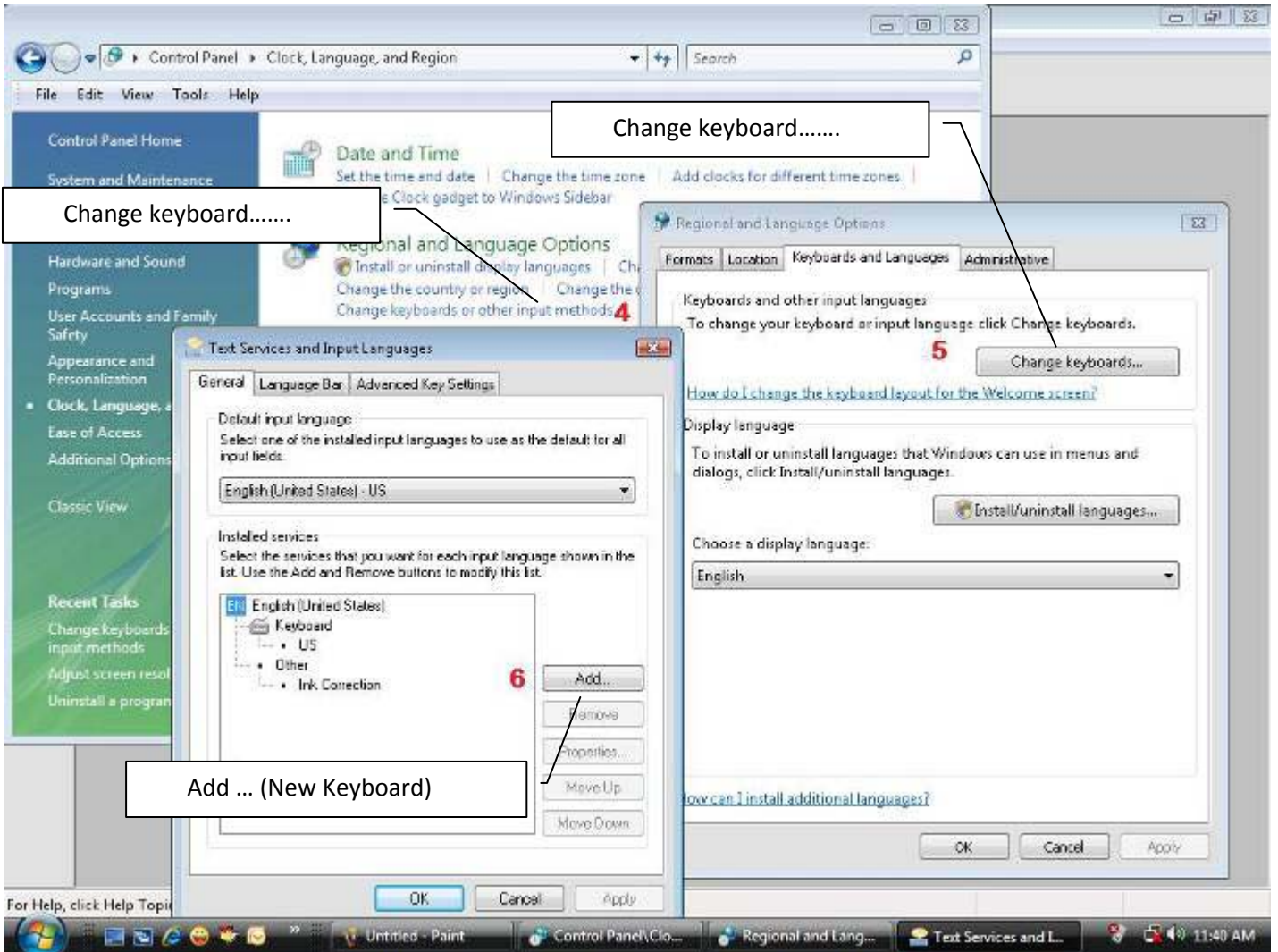
HOW TO ADD THE LAO UNICODE KEYBOARD TO YOUR SYSTEM

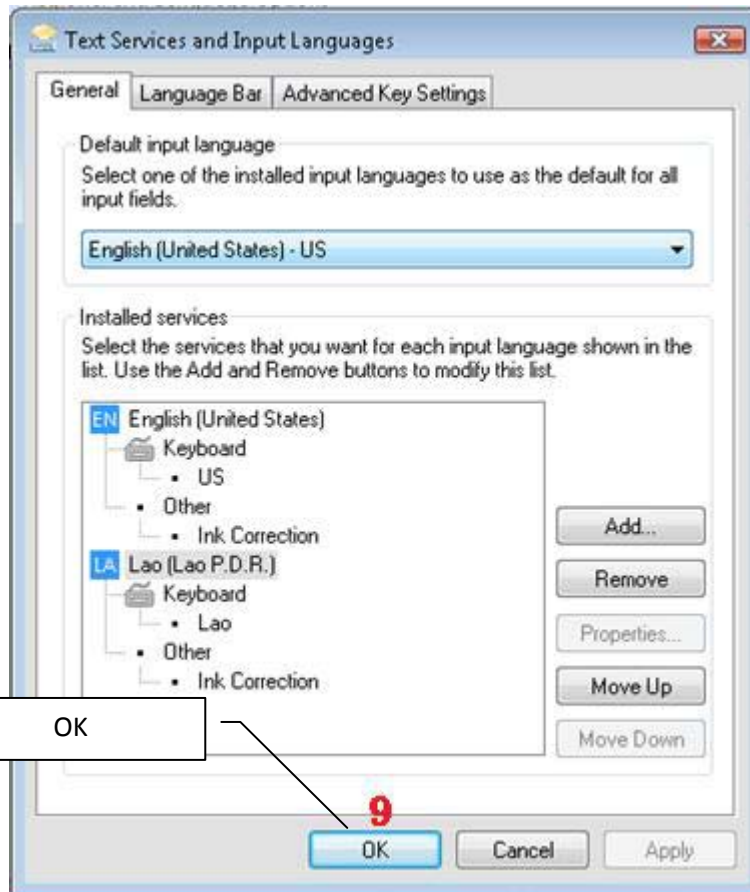


Click on Start Command Button

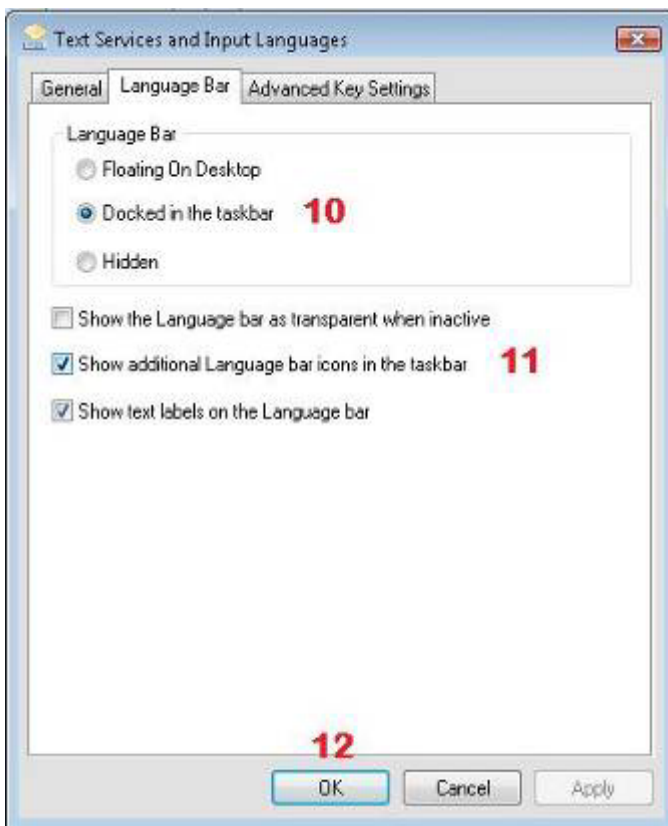


Change keyboards or other input methods



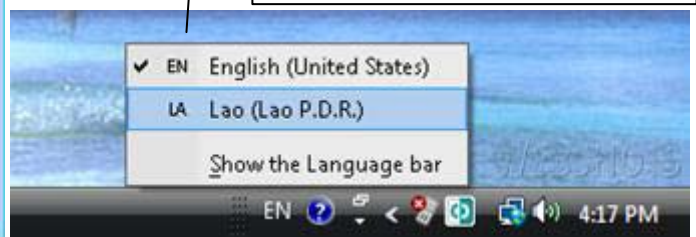


TO BE SURE THAT THE KAKEYBOARD ICON WILL BE APPEARED ON THE TASK BAR, FOLLOW THE FOLLOWING STEP:



You will see the **EN** icon on the taskbar, just to click on it, you will have the popup menu and then click on Lao (Lao PDR) keyboard.

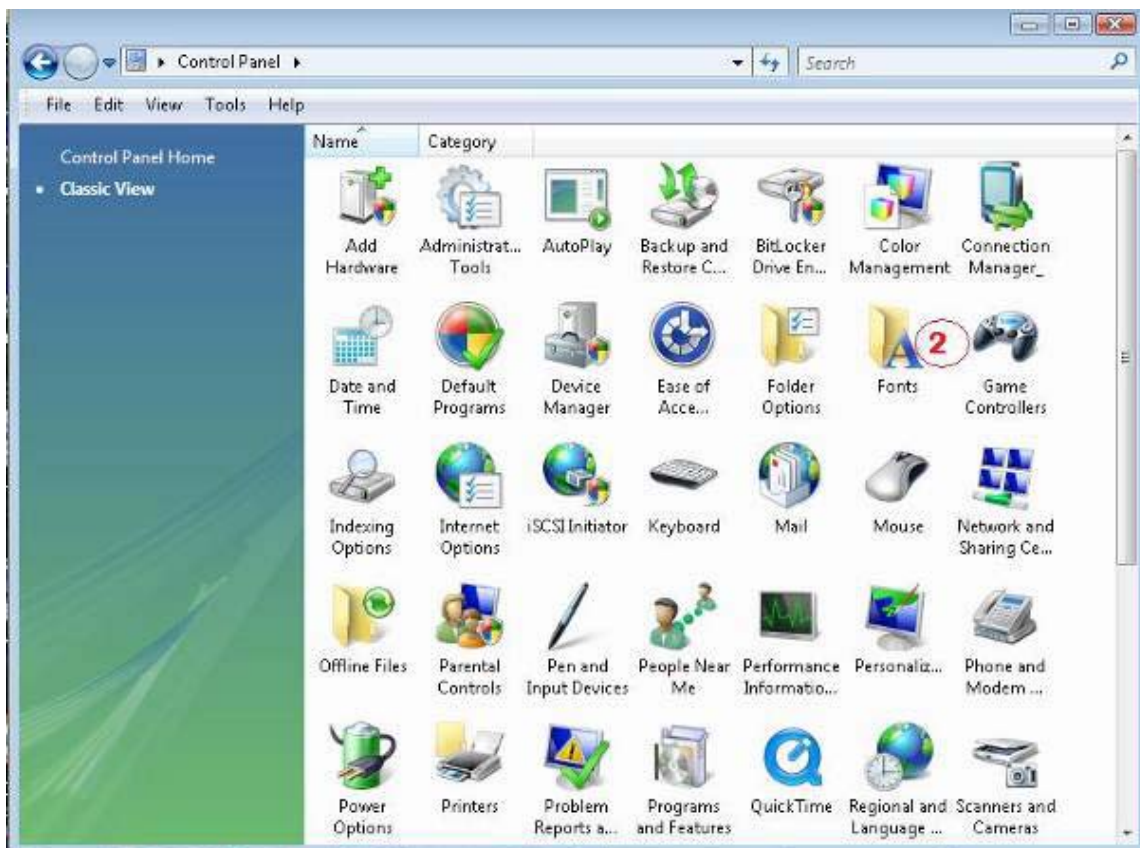
OR: press the Alt + Shift to switch between English and Lao Keyboard

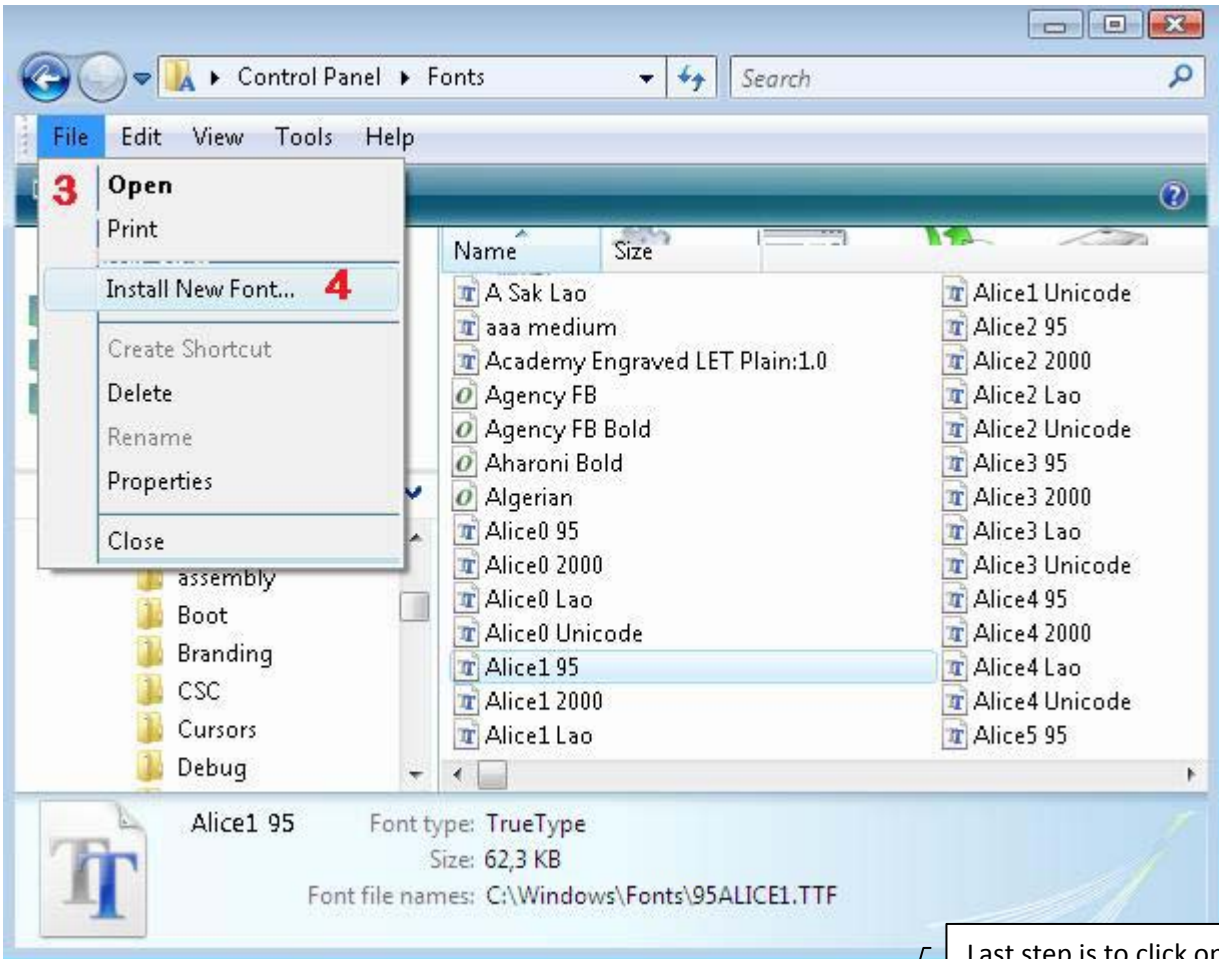


ENJOY IT!

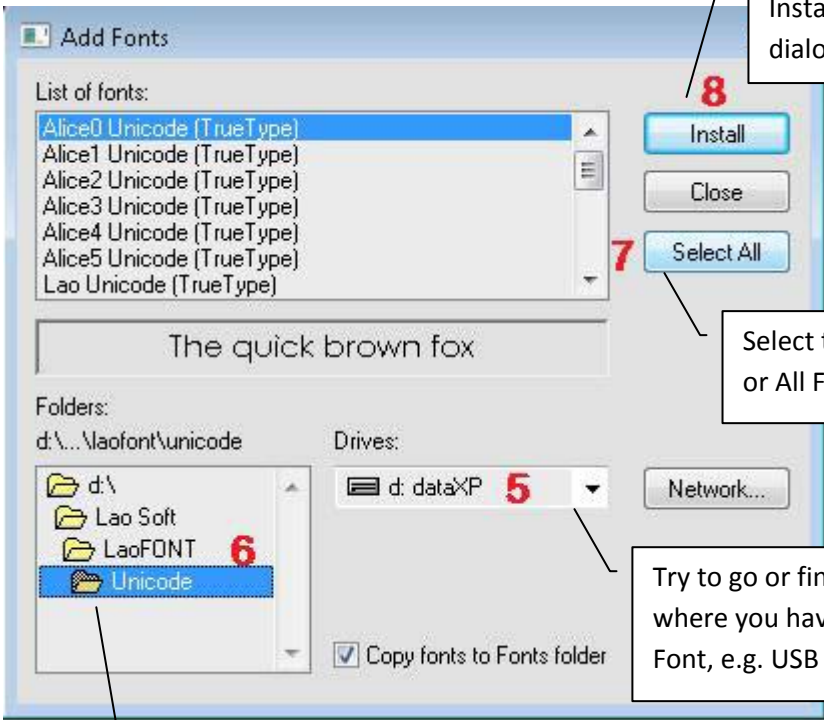
TO INSTALL OR ADD THE ADDITIONAL UNICODE FONT:

Go to the control panel and then follow the step number...





Last step is to click on :
Install and then follow the
dialog box message.



Select the Font you want
or All Font

Try to go or find the drive
where you have stored the
Font, e.g. USB DRIVE

Try to find the folder where you have
stored the Font...